

Fundamentals of Emergency Sheltering





Ehren Melius
Senior Shelter Manager
Field Investigations and Response Team
ASPCA

ehren.melius@aspca.org

Overview

- Planning and Prep
- Location
- Setup and Design
- Admission
- Operations
- Closing Shop
- Statistics



Planning and Preparation

- Plan the operation
- Timeline
- Who's doing what?
- Capability not capacity
- Confidential



Personnel

- Make sure you have the people to pull it off
...if not reach out
- Current operation: 40 responders a day!
- Current operation: Over 100 unique responders in first week
- Two Resource Unit Leads (Planning)
 - Response Partners
 - Staff, Consultants, Volunteers
- 1:10 in the beginning

Supplies

Hurricane Sandy

- 600 wire crates
- 300 fence panels
- 60,000 training pads
- 4,000 disposable litter boxes
- Everything else...



Types of EAS

- Sheltering in place
- Sheltering in traditional brick and mortar shelter
- Cohabitated shelters
- Co-located shelters
- Stand-alone shelters

Location, Location, Location



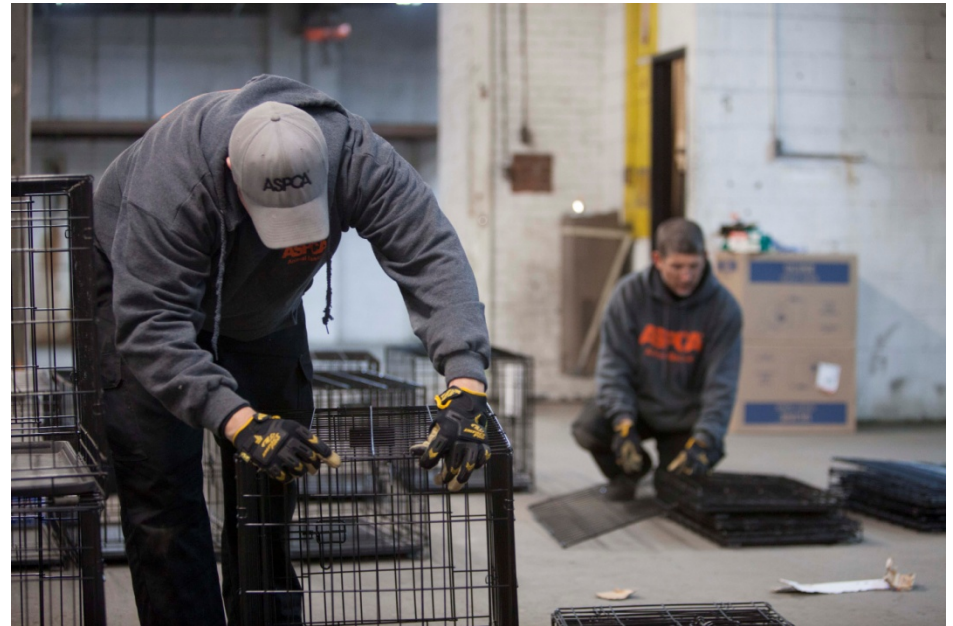
How to Decide

- How many and what species?
- Duration
- Indoors vs. Outdoors
- Water Access
- Ventilation
- HVAC
- Neighborhood
- Cost



Criminal vs. Disaster

- Evidence or Owned
- Evidence Processing
- Visitation
- Personnel differences



Setup

Sections

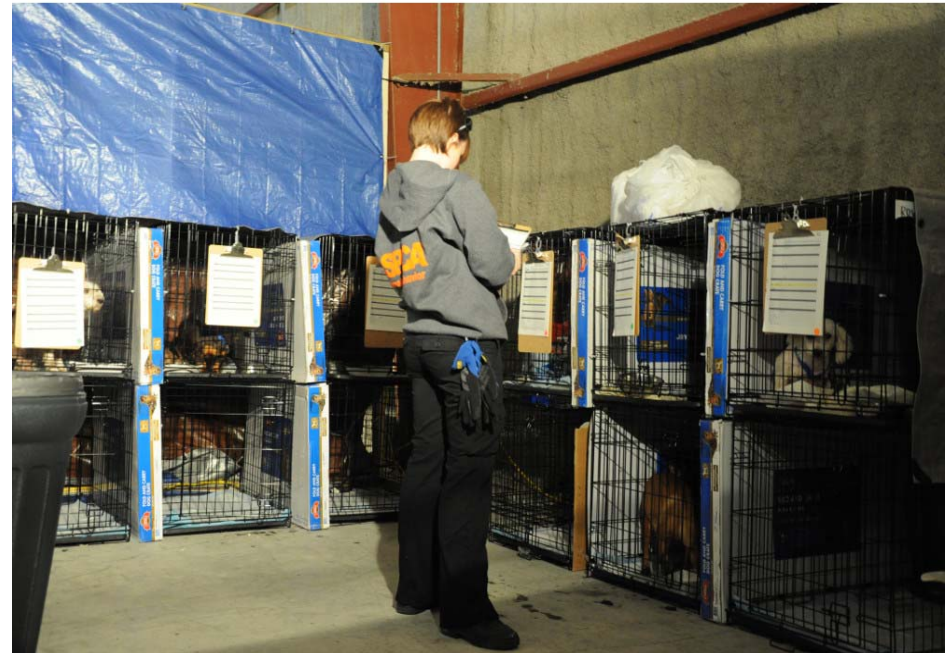
- General Population
- Isolation x 2
- Maternity/Nursery
- Quiet Area
- Exercise Area
- Medical
- Storage
- Leave room to expand

Considerations

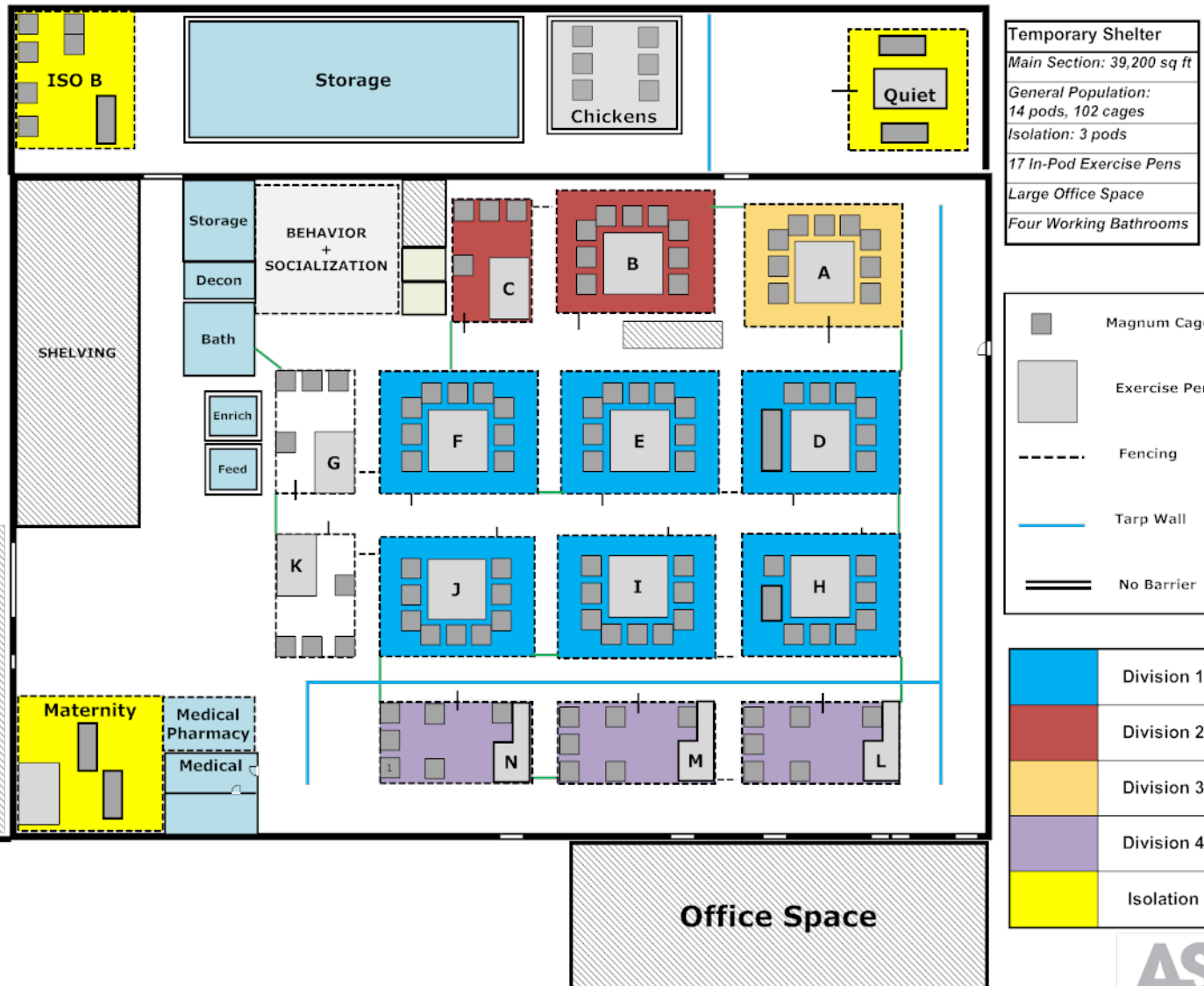
- Disease Control
- Behavioral Health
- Flow
- Efficiency
- Safety
- Other species

Layout and Housing

- Rows vs Pods
- Size of enclosures
- Stacking
- Visual and physical barriers
- Long-term vs Short-term



Design







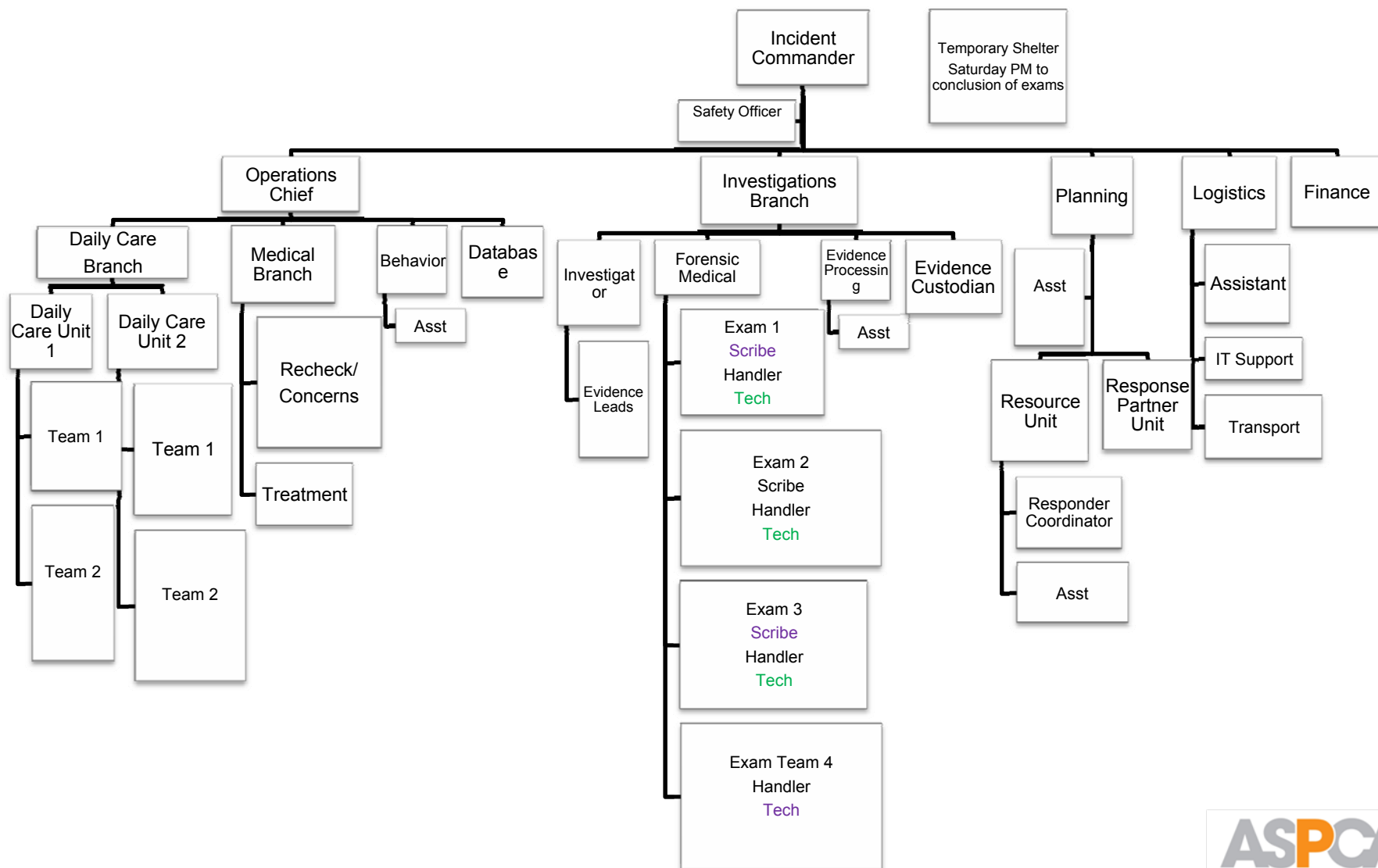


Admissions

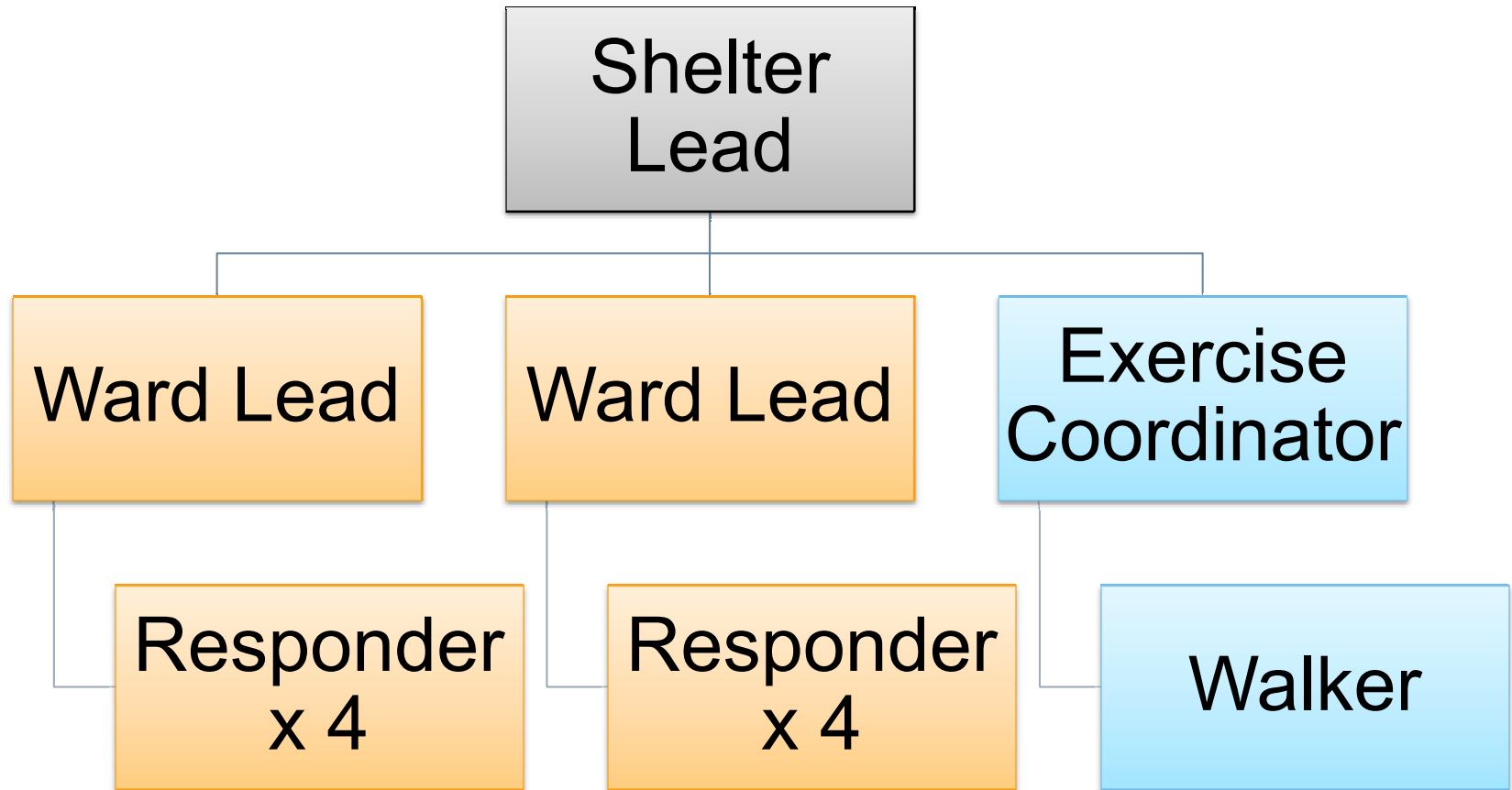


The Team
Initial Overview
Identification
Triage/Vaccinate
Location
Inventory
Disaster vs. Cruelty

Daily Operations



Daily Care Breakdown



Orientation and Training

Orientation

- Overview of the operation
- Code of conduct
- Basic ICS
- Who's who?
- Tour/General Rules
- Questions

JITT

- More in depth look at role
- Safety
- Hands-on training...how to take out a dog, how to clean, etc.
- Assigned to shadow
- 1:6

Protocols and Job Descriptions

Protocols

- Admissions
- Cage Cleaning
- Isolation Cleaning
- Feeding
- Dishwashing
- Decon
- Handling
- Loose Dog
- Animal Movement

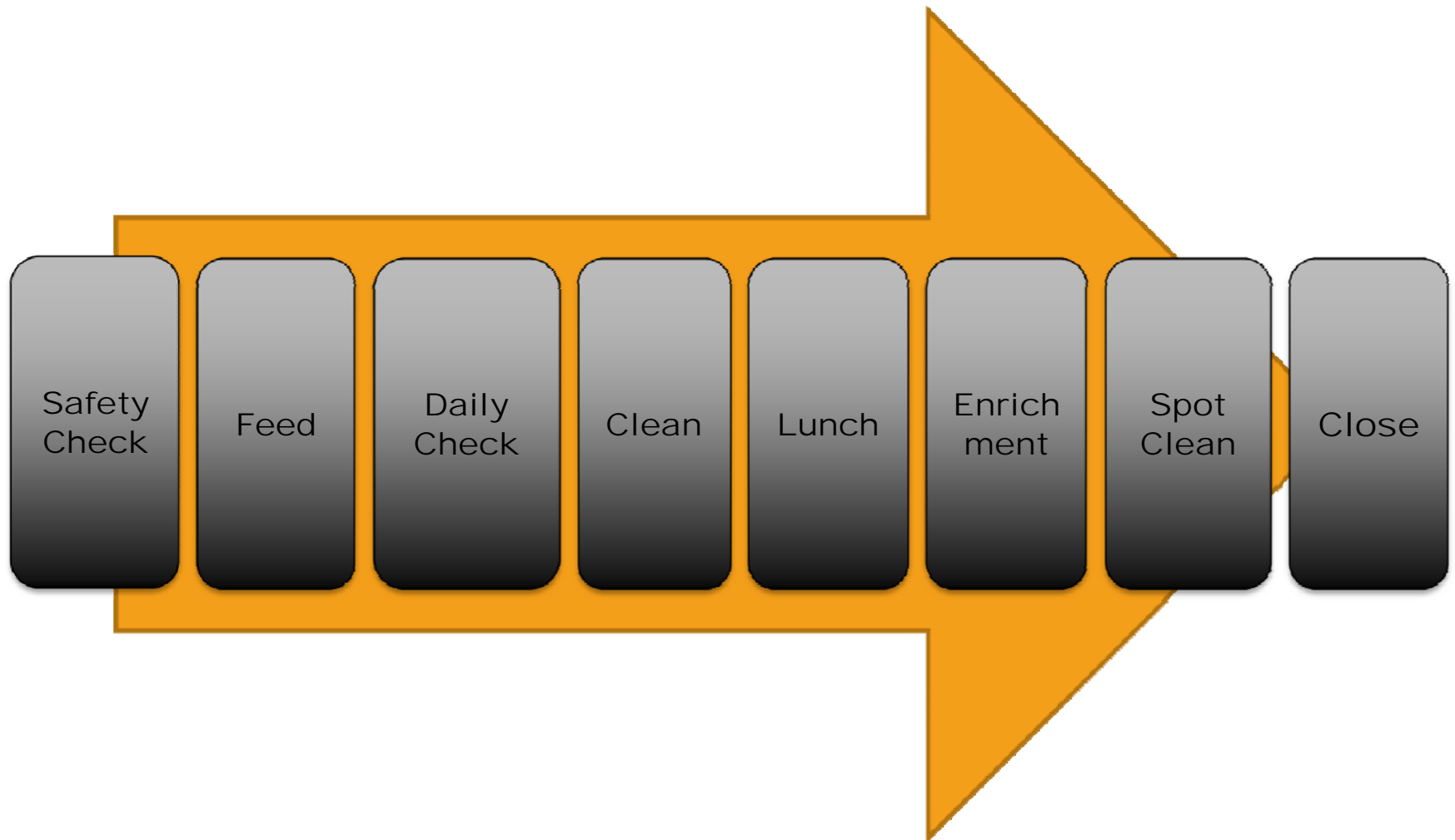
Job Descriptions

- Shelter Manager
- Floor Lead
- Animal Handler
- Designated Handler
- Exercise Coordinator

Protocols

1.	General Recommendations <ul style="list-style-type: none">a. Sanitize dishes with a cleaning and disinfecting step – washing alone or Accel soaking alone are not enough. Thorough rinsing and drying are also important steps.
2.	Removal of Dirty Dishes <ul style="list-style-type: none">a. Dirty water bowls should be removed from cages and collected to take together to the dishwashing area.b. All organic material should be emptied into the garbage, and excessively soiled items scraped off as well as possible.
3.	Cleaning Dishes <ul style="list-style-type: none">a. Add an adequate amount of antibacterial dishwashing liquid to hot water.b. Wearing rubber gloves, scrub dishes thoroughly in the hot soapy water with a scrub brush. Soak heavily soiled dishes or pans prior to scrubbing.c. Thoroughly rinse detergent off the dishes.d. Soak dishes in a tub filled with a 1:64 (1/4 Cup per Gallon) let soak for 5 minutes. <i>*Goggles and gloves must be worn when mixing Accel solution.</i>e. Rinse dishes with clean water and allow dishes to air dry in a clean area.f. Remember if a large number of dishes are washed that it may be necessary to drain the dirty water, and replace occasionally with new hot soapy water.
4.	Equipment Requirements <ul style="list-style-type: none">a. Antibacterial dishwashing liquid, Accel, measuring cup for properly mixing Accel, scrub brush, gloves, goggles, water source and containers/sinks.

Daily Flow



Daily Monitoring



- Cage Cards
- Behavior Cards
- Signage
- Daily Observation Sheets
- Medical and Behavior Concern Boards

Daily Observations

- Twice a day monitoring
- Tracking
- Easy to forget, but critical

DAILY CARE OBSERVATION FORM

ID# _____

DATE																				
TIME	AM	PM	AM	PM	AM	PM	AM	PM	AM	PM	AM	PM	AM	PM	AM	PM	AM	PM	AM	PM
INITIALS																				
APPETITE																				
Good																				
Average																				
Nibbling																				
Not eating																				
STOOL																				
Normal																				
Loose																				
Diarrhea																				
Bloody																				
None																				
URINE																				
Normal																				
Excessive																				
Strong odor																				
Bloody																				
Straining																				
None																				
VOMITING																				
Food																				
Bile																				
Hairball																				
Blood																				
SNEEZING																				
Clear																				
Yellow																				
Green																				
Blood																				
COUGHING																				
Dry/hacking																				
Wet																				
Consistent																				
Inconsistent																				
EYES																				
Clear discharge																				
Pus/mucus																				
Red/irritated																				
Swollen																				

Comments: _____

Medical and Behavior Concerns

[illegible]

Feeding

- Individualized
- Ease of Distribution
- Identification
- Special Diets
- Maternity



Cleaning and Disinfecting

- Quarantine Period
- Biosecurity/PPE
- Disinfectant
- Disease Control
- Efficiency



Enrichment and Exercise



Enrichment Schedule

Sun.	Mon.	Tues.	Wed.	Thurs.	Fri.	Sat.
Playtime: ALL PODS	Playtime: ALL PODS	Playtime: ALL PODS	Playtime: ALL PODS	Playtime: ALL PODS	Playtime: ALL PODS	Playtime: ALL PODS
Pupsicles: Pods A, C, D	Pupsicles: Pods M, N, O, RW Iso	Pupsicles: Pods I, J, K ,L, Maternity	Pupsicles: Pods E, F, G, H	Pupsicles: Pods A, C, D	Pupsicles: Pods M, N, O, RW Iso	Pupsicles: Pods I, J, K ,L, Maternity
Kongs: Pods E, F, G, H	Kongs: Pods A, C, D	Kongs: Pods M, N, O, RW Iso	Kongs: Pods I, J, K ,L, Maternity	Kongs: Pods E, F, G, H	Kongs: Pods A, C, D	Kongs: Pods M, N, O, RW Iso
Wobblers: Pods I, J, K ,L, Maternity	Wobblers: Pods E, F, G, H	Wobblers: Pods A, C, D	Wobblers: Pods M, N, O, RW Iso	Wobblers: Pods I, J, K ,L, Maternity	Wobblers: Pods E, F, G, H	Wobblers: Pods A, C, D
Chews: ALL PODS	Chews: ALL PODS	Chews: ALL PODS	Chews: ALL PODS	Chews: ALL PODS	Chews: ALL PODS	Chews: ALL PODS
Scent: Pods M, N, O, RW Iso	Scent: Pods I, J, K ,L, Maternity	Scent: Pods E, F, G, H	Scent: Pods A, C, D	Scent: Pods M, N, O, RW Iso	Scent: Pods I, J, K ,L, Maternity	Scent: Pods E, F, G, H



NO VALVES
Pod 1-2 #100
Pod 1-5 #100

NO KINGS
Pod 1-3 #120

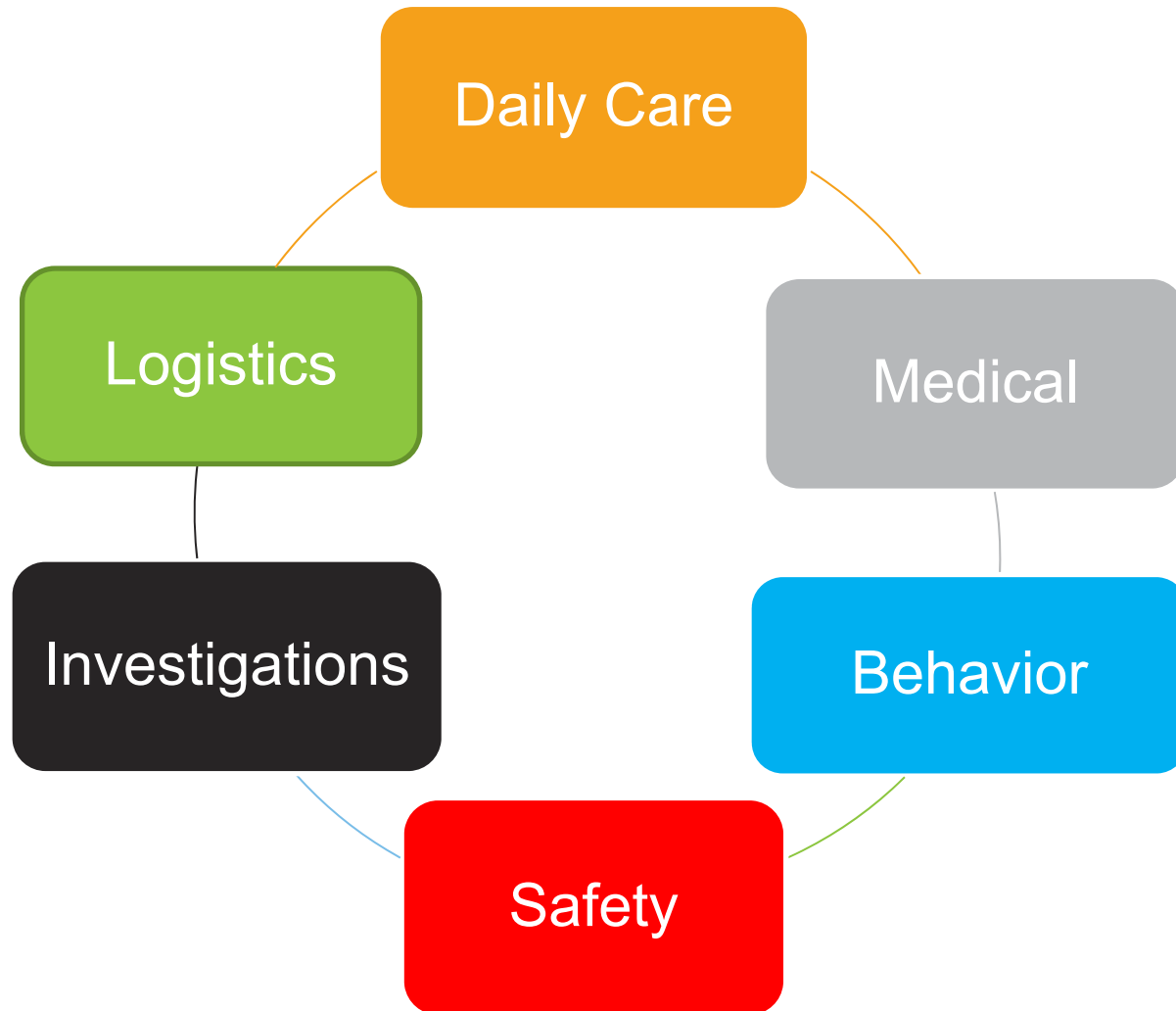


Considerations

- Outdoor exercise areas
- Indoor exercise areas
- Kennel stress
- Changing environment during longer operations
- Keeping animals active



Communication



Closing Shop

Timeline

Placement

- Adoptions
- Transfer
- Foster

Demob

- Decon
- Storage



2011-13 Sheltering

Operation	Month/Year	# of Days	# of Animals
AR Tornado	Apr 11	5 days	100
MO Flooding	Apr 11	30 days	500
TN Flooding	Apr 11	30 days	200
MO Tornado	May 11	44 days	1300
ND Flooding	July 11	14 days	500
Hurricane Irene	Aug 11	7 days	200
Hurricane Irene	Aug 11	14 days	260
KY Seizure	Oct 11	158 days	138
AR Seizure	Nov 11	42 days	184
FL Seizure	Mar 12	201 days	692 (Cats)
NY Seizure	Jun 12	78 days	50
Hurricane Sandy	Nov 12	77 days	279
MO Seizure	Mar 13	130 days	115
	Average	48.4 days	347.5

Thank you!

Ehren Melius
Senior Shelter Manager
ASPCA

ehren.melius@aspca.org



Related ASPCApro Webinars

aspcapro.org/fir

[Emergency Shelter Medicine](#) Feb. 26

Sarah Kirk, DVM, Medical Director, ASPCA

Recorded Webinar Sessions: 2012 8-part Series

[FIR: Rescuing Animals from Cruelty and Disasters](#)

[On the Frontlines: Joining the ASPCA Field Investigations and Response Team](#)