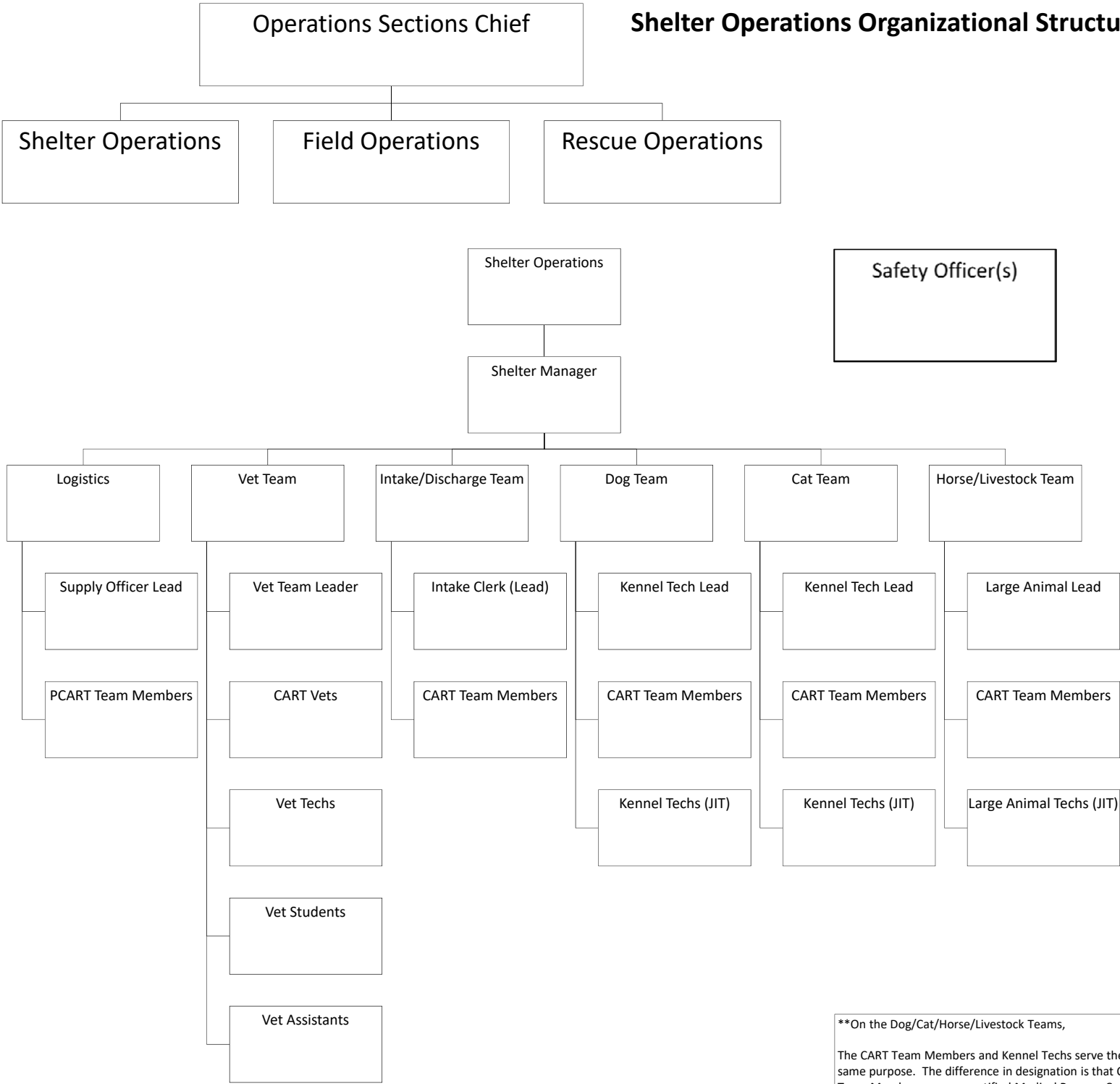
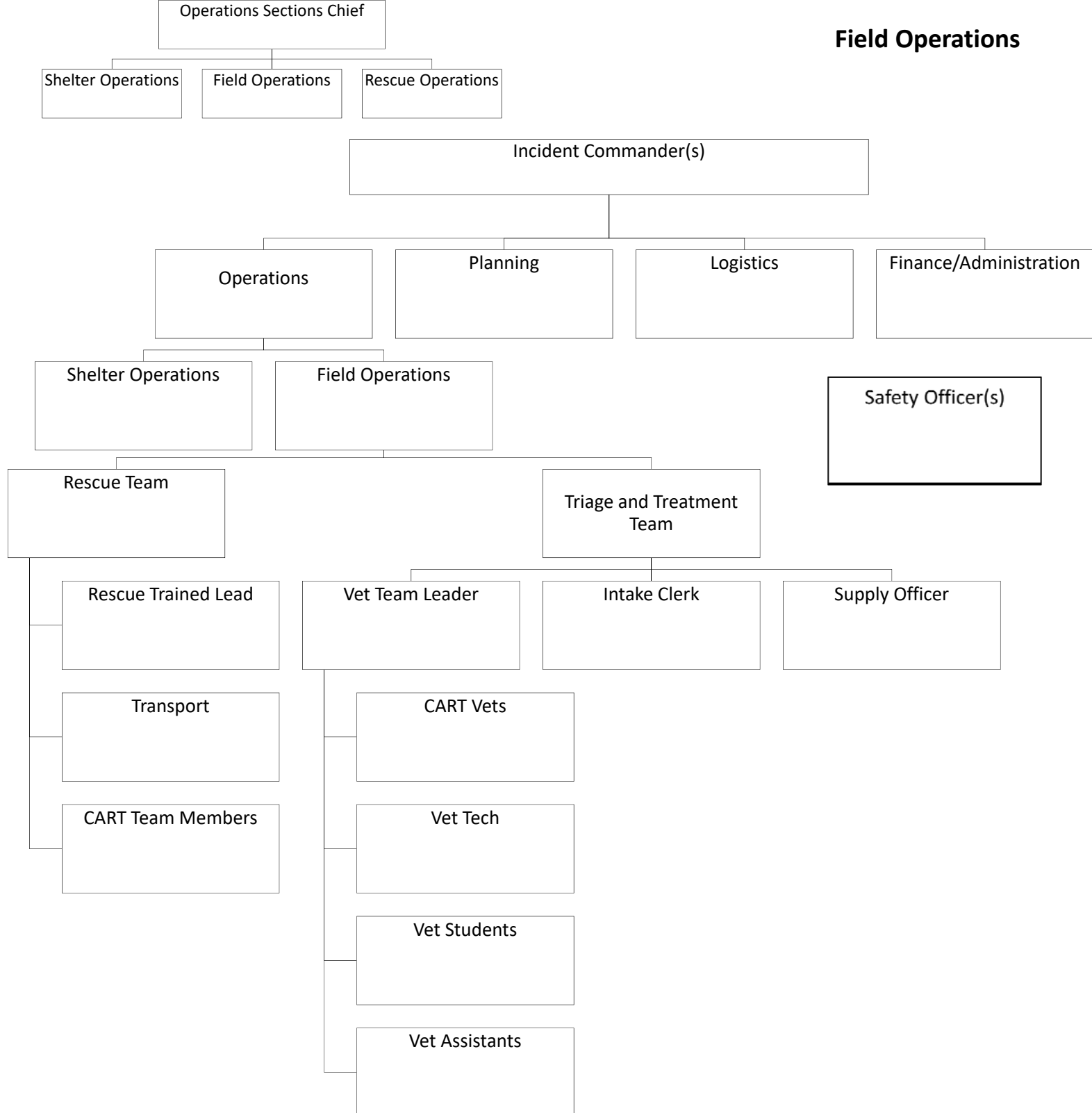


# Shelter Operations Organizational Structure



**\*\*On the Dog/Cat/Horse/Livestock Teams,**

The CART Team Members and Kennel Techs serve the same purpose. The difference in designation is that CART Team Members are pre-certified Medical Reserve Corps volunteers and Kennel Techs may be volunteers recruited in times of disaster. The number of kennel techs needed is scaled to the size of the event.

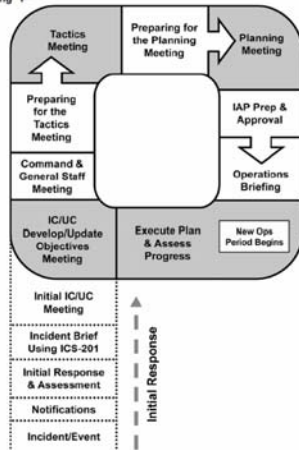


## Field Operations

# ICS 207 Modified

<b>1. Incident Name:</b>	<b>2. Operational Period:</b> Date From: _____ Date To: _____ Time From: _____ Time To: _____	
<b>3. Organization Chart</b> <div style="text-align: center; margin-top: 20px;"> </div>		
<b>ICS 207</b>	<b>IAP Page</b> _____	<b>4. Prepared by:</b> Name: _____ Position/Title: _____ Signature: _____ Date/Time: _____

The Planning "P"



- Incident Command**
- Sets the incident objectives, strategies, and priorities
  - Has overall responsibility for the incident.
- Operations**
- Conducts operations to reach the incident objectives.
  - Establishes the tactics and directs all operational resources.
- Planning**
- Supports the incident action planning process.
  - Tracks resources, collects/analyzes information, maintains documentation.
- Logistics**
- Provides resources and needed services to support the achievement of the incident objectives.
- Finance & Administration**
- Monitors costs related to the incident.
  - Provides accounting, procurement, time recording, and cost analyses.